

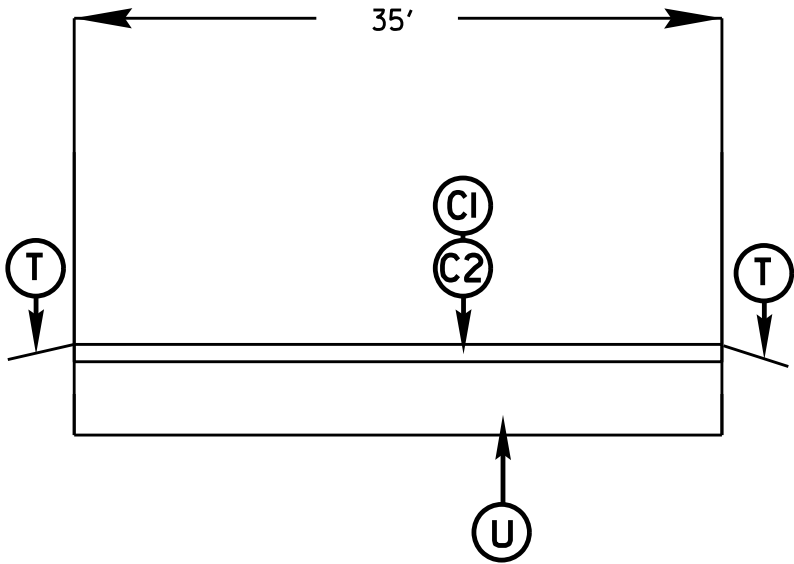
09/08/99

CONTRACT: DN01134

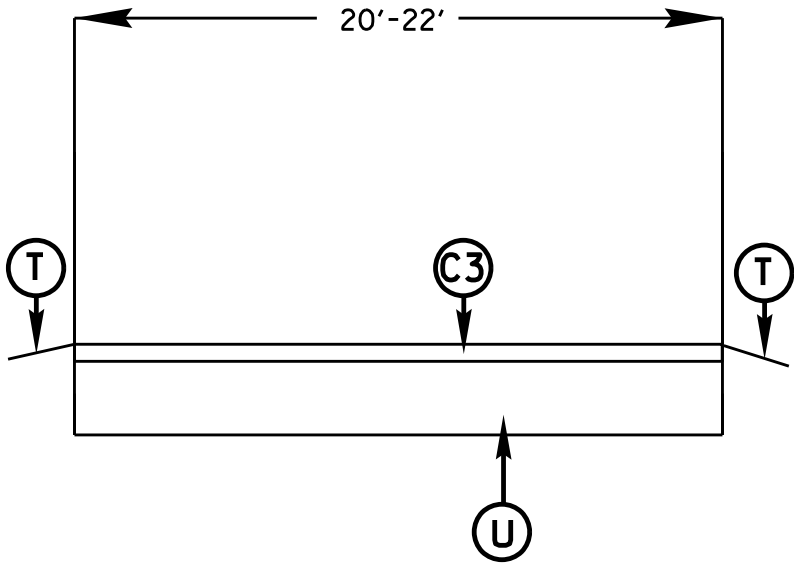
STATE	STATE PROJECT REFERENCE NO.	SHEET NO.	TOTAL SHEETS
N.C.	2026CPT.14.05.10881	6	
STATE PROJ. NO.		F. A. PROJ. NO.	DESCRIPTION
2026CPT.14.05.10881			
2026CPT.14.05.20881			

SURFACING SCHEDULE	
C1	PROP. APPROX. 1 1/2" ASPHALT CONCRETE SURFACE COURSE, TYPE S9.5C, AT AN AVERAGE RATE OF 168LBS. PER SQ. YD.
C2	PROP. APPROX. 1 1/4" ASPHALT CONCRETE SURFACE COURSE,TYPE S9.5C, (LEVELING COURSE), AT AN AVERAGE RATE OF 140LBS. PER SQ. YD.
C3	PROP. APPROX. 1 1/2" ASPHALT CONCRETE SURFACE COURSE, TYPE S9.5B, AT AN AVERAGE RATE OF 165LBS. PER SQ. YD.
C4	PROP. APPROX. 3/4" ASPHALT CONCRETE SURFACE COURSE,TYPE S9.5B, (LEVELING COURSE), AT AN AVERAGE RATE OF 82.5LBS. PER SQ. YD.
T	SHOULDER RECONSTRUCTION WITH ASB. 2' WIDE UNLESS DIRECTED BY PROJECT ENGINEER -SEE PROJECT SPECIAL PROVISIONS-
U	EXISTING PAVEMENT

TYPICAL 1



TYPICAL 2



TYPICAL 5

